

ZimaNet Remote Access Testing Guide

All-new remote access solution delivers a faster, more stable connection experience. Thanks in advance!

Testing Process

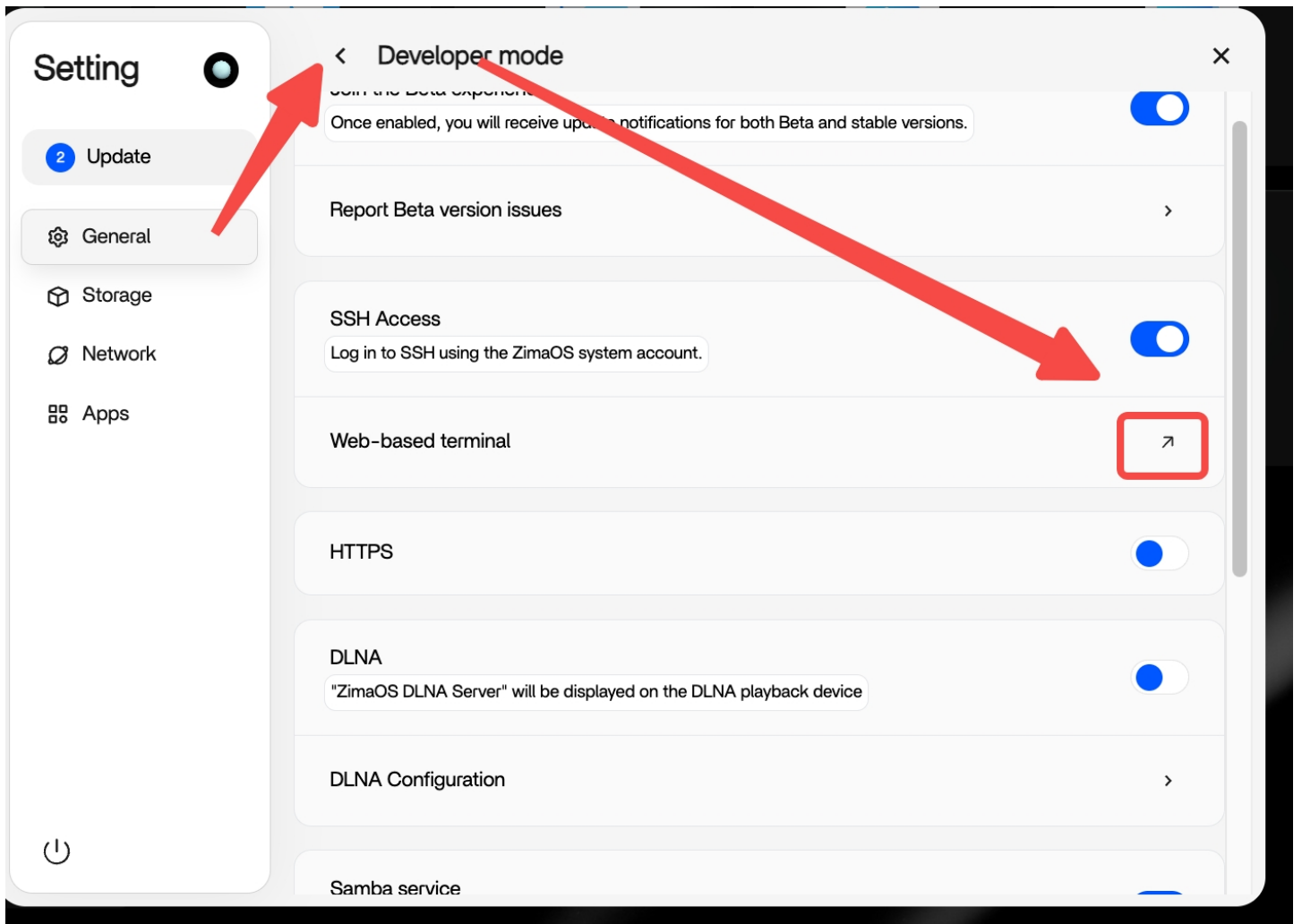
1. Install the ZimaNet service on ZimaOS
2. Connect your device using the iOS beta app
3. Upload the test report

Step 1: Install the ZimaNet Service

1. Open the terminal and log in with Root privileges

Go to:

Settings → Developer Mode → Web-based Terminal



Then log in with your username and password.

Then enter:

代码块

```
1 sudo -i
```

```
Space login: ██████
Password:

( ) ( ) (V) / \ ( ) ( )
 / \ ) ( / \ V / \ ( 0 ) \ / \
( ) ( ) \ ) ( / \ / \ ( ) ( )

— Welcome to Zima OS, casaos —
Date: Wednesday, April 22, 2026 | Uptime: up 2 days, 1 hour, 5 minutes

casaos@Space:~ → $ sudo -i
Password:

( ) ( ) (V) / \ ( ) ( )
 / \ ) ( / \ V / \ ( 0 ) \ / \
( ) ( ) \ ) ( / \ / \ ( ) ( )

— Welcome to Zima OS, root —
Date: Wednesday, April 22, 2026 | Uptime: up 2 days, 1 hour, 5 minutes

root@Space:/root → # █
```

2. Create the installation directory

Run the following commands:

代码块

```
1  mkdir -p /DATA/ZimaNet
2  cd /DATA/ZimaNet
```

```
root@Space:/root → # mkdir -p /DATA/ZimaNet
root@Space:/root → # cd /DATA/ZimaNet
```

3. One-click install the ZimaNet service

Run the following command in the current directory:

代码块

```
1  curl -fsSL https://download.test.et.icewhale.io/install/install-zimanet-
    manager.sh | sh
```

The installation script will automatically complete the following tasks:

- Install `zimanet_core`
- Start `zimanet-core.service`
- Download `zimanet-manager`
- Display the current device Remote ID

Example output:

```
root@Space:~/ZimaNet → # curl -fsSL https://download.test.et.icewhale.io/install/install-zimanet-manager.sh | sh
starting install module...
install local raw package /var/lib/extensions/zimanet_core.raw
install success
Using remoteID as ZimaNet network fallback: fee4d62a6d153b37
Reloading and starting ZimaNet service: zimanet-core
Service started and RPC endpoint is ready.
remoteID used by ZimaNet: fee4d62a6d153b37
To view your current remoteID, run:
  grep '^ZIMANET_NETWORK_NAME=' /var/lib/casaos/zimanet_core/zimanet-core.env
Run `zimanet-manager report` when you want to collect telemetry.
If ZimaNet is offline after a reboot, run: sudo systemctl restart zimanet-core.service
Installation complete! zimanet-manager 0.1-alpha is ready.

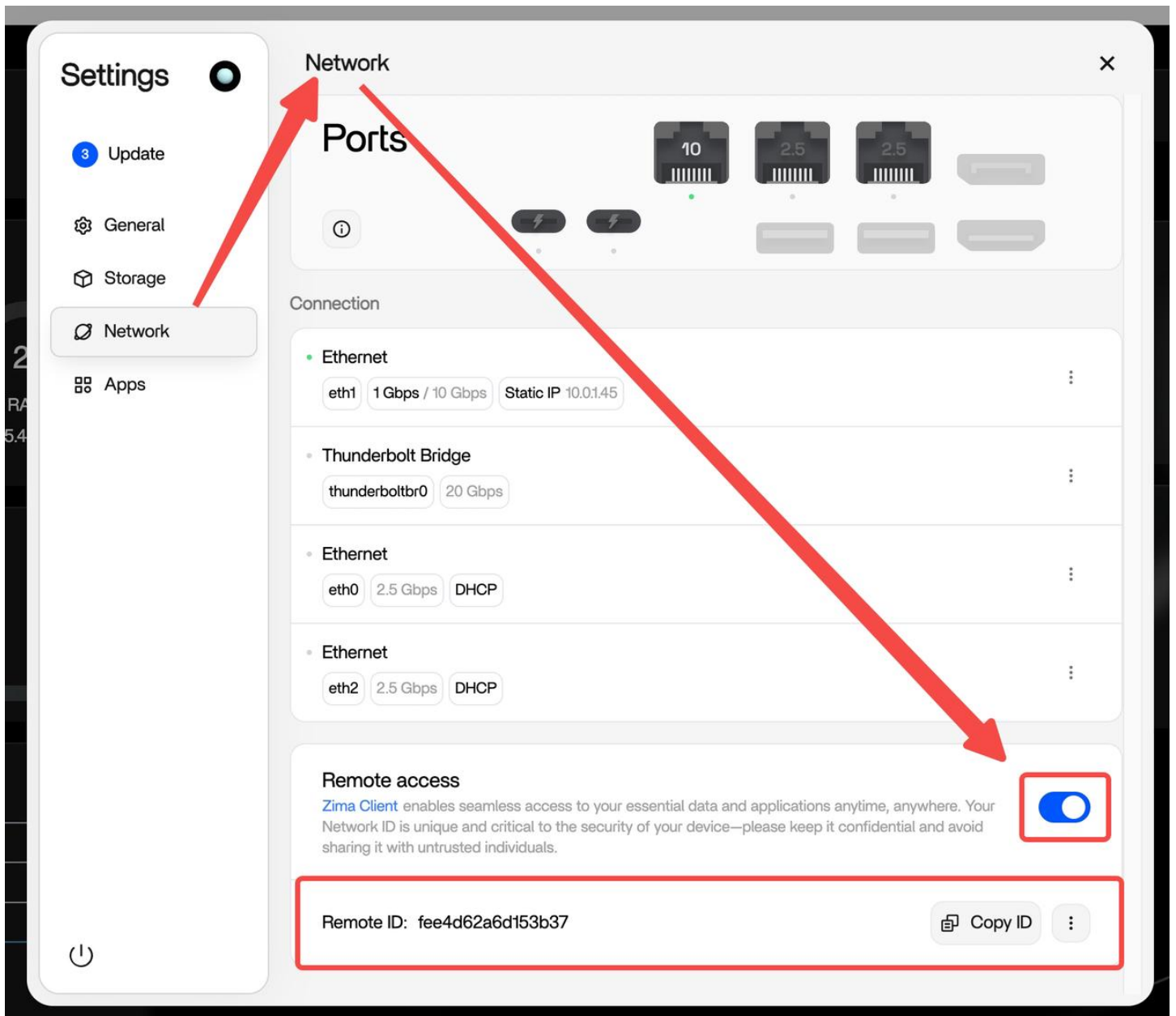
remoteID: fee4d62a6d153b37

Check status with:
./zimanet-manager status
```

4. Enable Remote Access

Go to: **Settings** → **Network** → **Remote Access**

Turn it on, then confirm that the **Remote ID** shown on the page matches the one displayed in the terminal.



Step 2: Test Connection on iPhone

Download the Beta App

TestFlight download link: <https://testflight.apple.com/join/m7FFnYWz>

First-Time Connection Notes

For your first test, please:

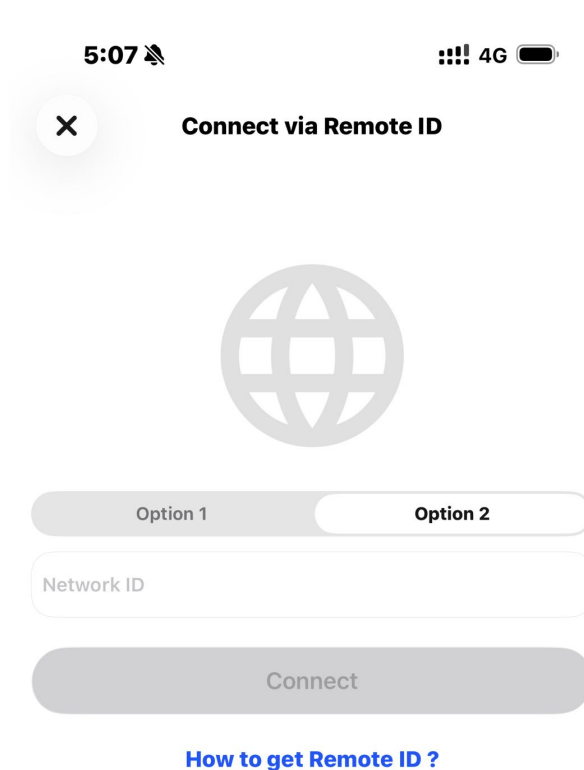
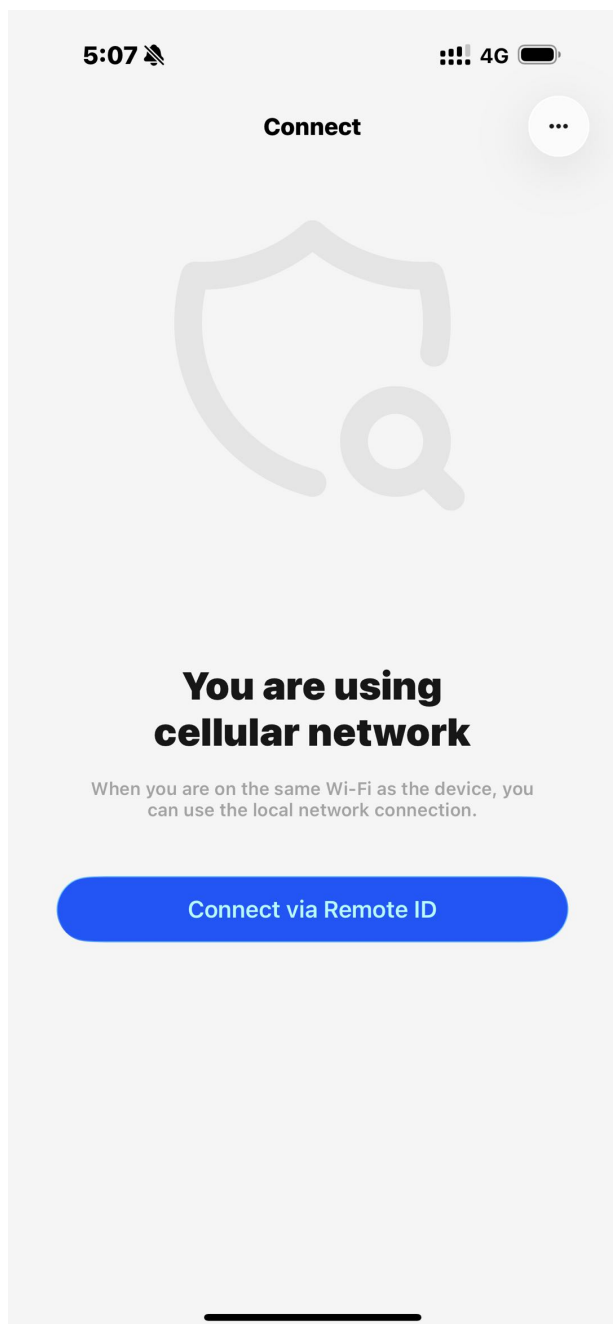
- **Turn off Wi-Fi**
- **Use cellular network (4G / 5G)**

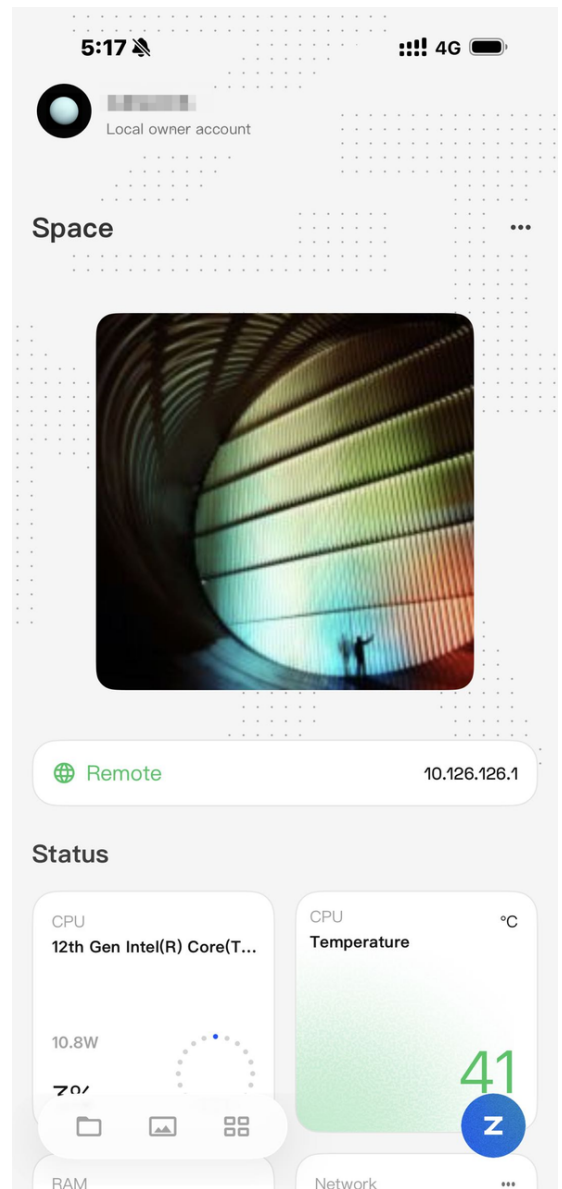
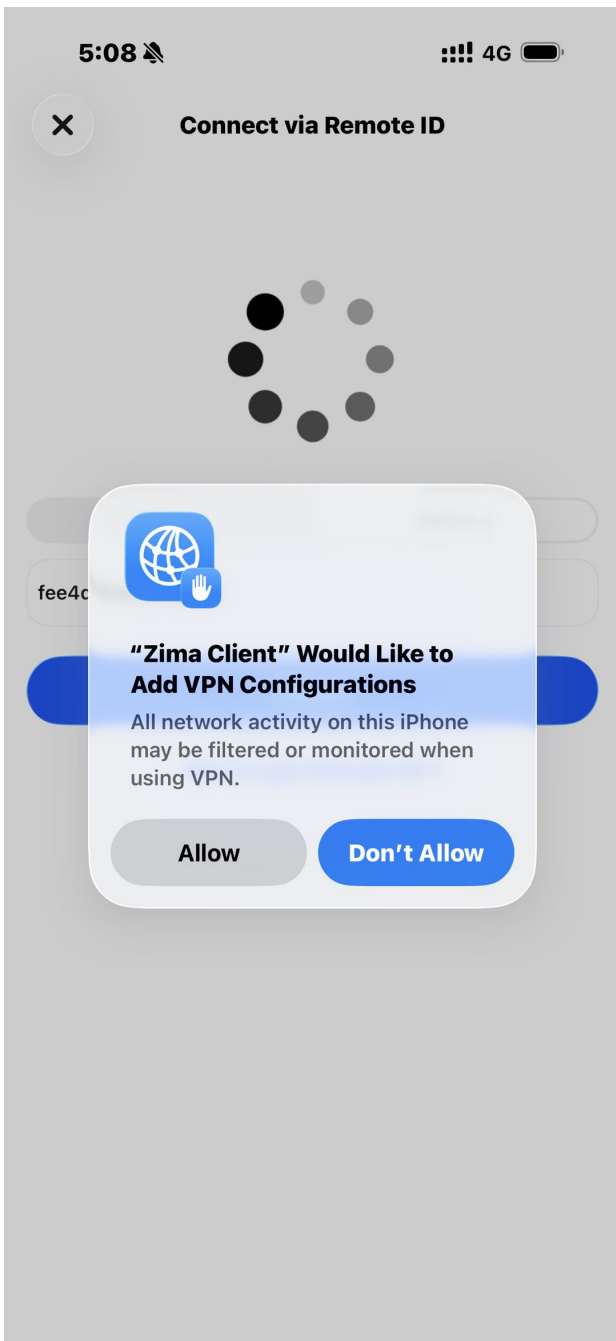
How to Connect

After opening the app:

1. Tap **Connect via Remote ID**
2. Select **Option 2**
3. Enter your **Remote ID**
4. Tap **Connect**
5. Approve the VPN permission request

Wait for the connection to complete.





Step 3: Upload the Test Report

After the connection is successful, run the following command in the terminal:

```
代码块  
1 ./zimanet-manager report
```

When prompted, enter **y**. The system will automatically collect logs and upload the report.

Example screen:

```
root@Space:~/ZimaNet → # ./zimanet-manager report
This command will collect ZimaNet telemetry and diagnostics, including:
- network summary, peers, routes, traffic telemetry, RPC telemetry
- packet loss, runtime sampling, service/process resource usage, recent logs
- a merged Markdown report for 1 instance(s), uploaded to https://report-upload-worker.icewhale.workers.dev/api/reports/upload
Continue? [y/N]: y
```

Optional: Install to the System Directory

If you would like to install it to the system path, run:

代码块

```
1 ZIMATIER_TOOL_INSTALL_DIR=/var/lib/casaos/zimanet_core/bin \  
2 curl -fsSL https://download.test.et.icewhale.io/install/install-zimanet-  
manager.sh | sh
```

If the connection fails, please share the following information: Network environment / Whether mobile data was enabled / Error screenshot / Your country

Thank you very much for your testing and support. Your feedback helps us continuously improve ZimaNet and bring the community a faster, more stable remote access experience.

Best regards,

IceWhale Team